



C2 GROUP

2023 OVERVIEW

TRANSPORTATION ELECTRIFICATION **SOLUTIONS POWERED BY** **A PROGRAMMATIC LENS**



WBENC



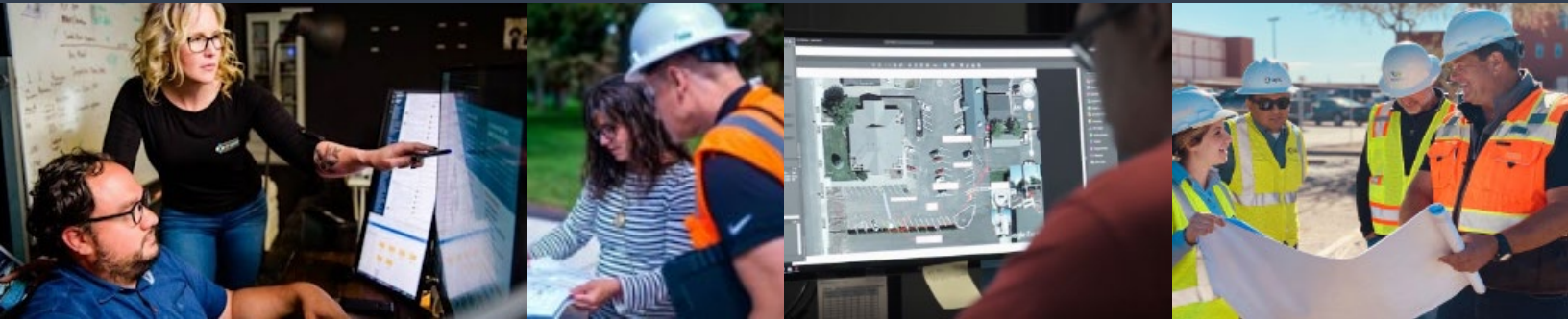
SBA WOSB
Woman Owned Small Business



ISNetwork®
MEMBER CONTRACTOR

GRADE A
CERTIFIED

OUR STORY



As a woman-owned engineering and program management firm established in 2016, we've built our company culture on developing innovative solutions that provide comprehensive and cost-effective solutions to our client partners.

With extensive experience in program management and new-to-market implementation solutions, our diverse team provides added value to our client partners with a hands-on approach from the top down that supports the streamlining of project deliverables, inclusive solution-based feedback, and the fostering of long-term trusted client partnerships.

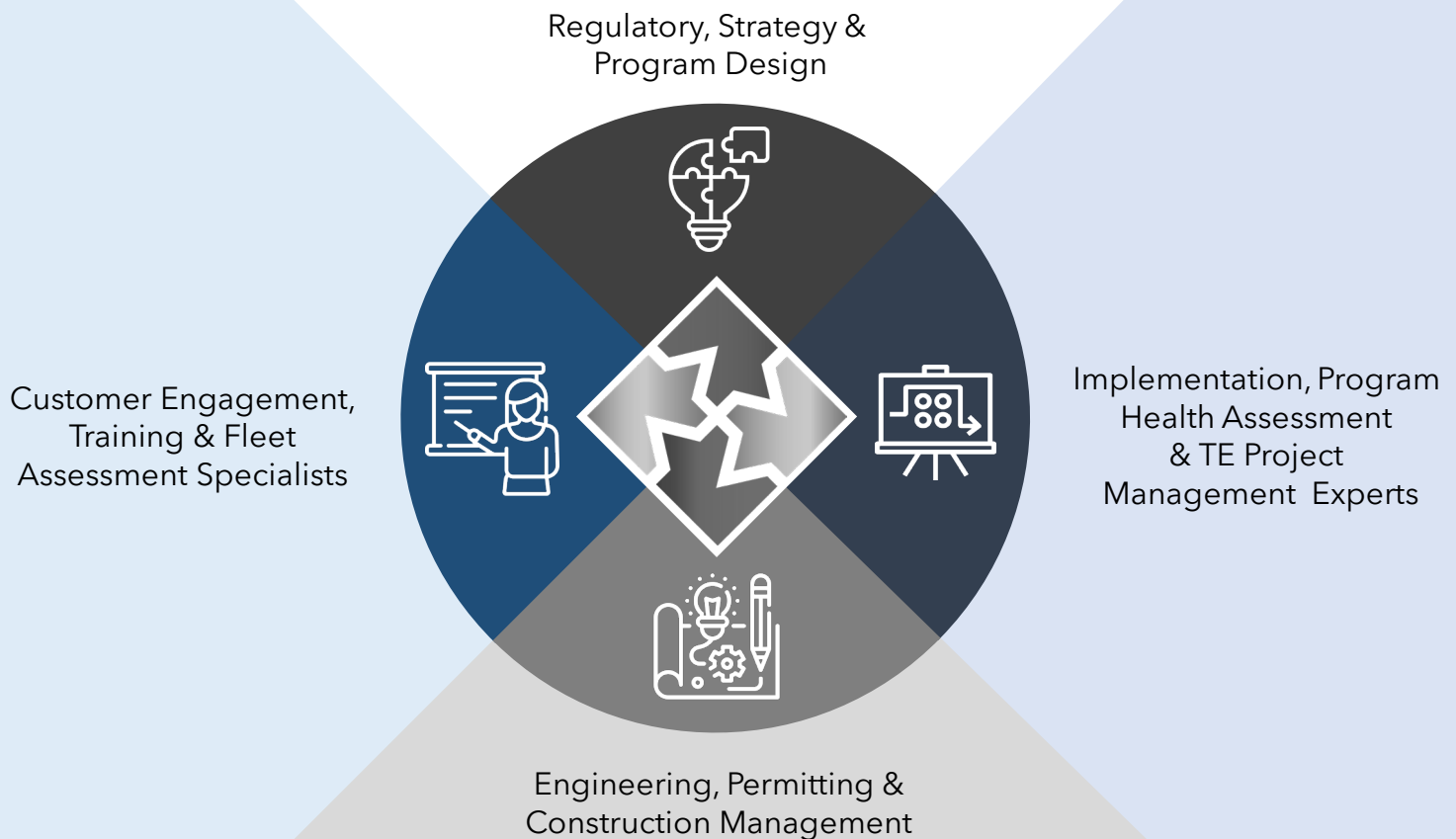
Our foundation of immersive collaboration allows us to self-perform specialized, scalable services with the agility unique to a small business while providing a trusted avenue for our clients to meet their support needs in all aspects of this dynamic electrification space.

Continuity in strategy, communication, and implementation define not only the success of the programs we support, but also the culture that has led us to become trusted electrification industry experts.

OUR VALUES IMMERSIVE INNOVATION • CREATIVE COLLABORATION • DIVERSITY & INCLUSION
LEAD WITH INTEGRITY • TRANSPARENT COMMUNICATION • COMMITMENT TO CLIENT PARTNERSHIP



ELECTRIFICATION CORE COMPETENCIES



ELECTRIFICATION SOLUTIONS POWERED BY A PROGRAMMATIC LENS

Since 2017, our team of TE experts has led large-scale electrification initiatives providing scalable solutions throughout each critical phase of electrification programs. Whether you need single or multi-phase support, we bring the expertise to provide curated solutions to help you reach your TE goals. Tap into our TE toolkits and best practices to accelerate your program's success.

PROGRAM & IMPLEMENTATION DESIGN

- Program Strategy & Design Support
- Implementation Process Development
- Standards Development
- Onboarding & Training Support
- Process Flow Analysis & Gap Assessment
- Electrification Analysis & Planning
- Cross-Functional Workshop Facilitation
- Vendor Management & RFP Development
- In-House Data Architects & Data Management
- Program Reporting & Scorecard Development
- Collateral & Marketing Development

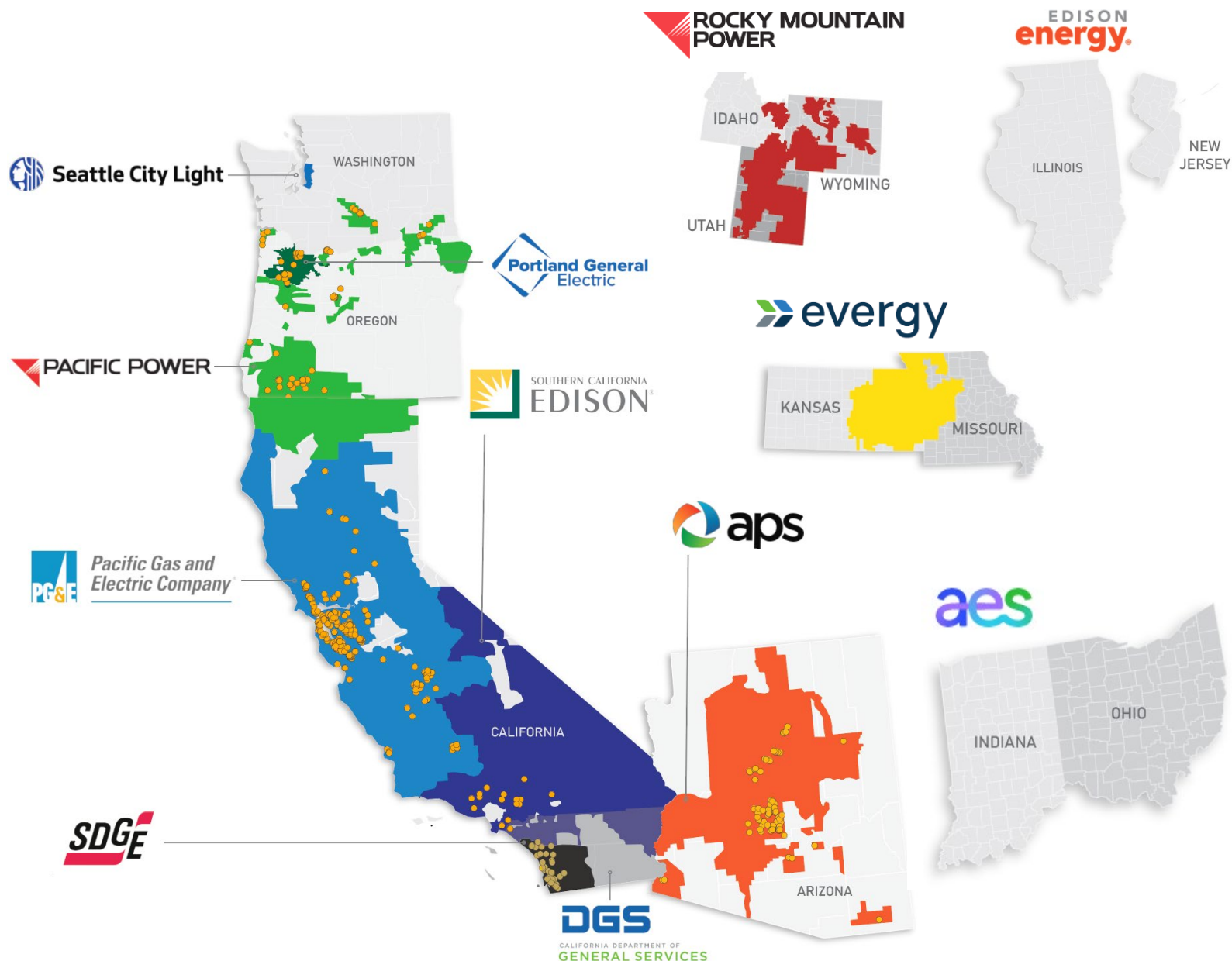
IMPLEMENTATION SUPPORT

- Fleet Assessment Solutions
- Pilot Program Implementation Specialists
- Site Assessment & Field Validation
- Engineering & Permitting
- Program Management Support
- Customer Engagement & Onboarding
- Video Production
- Program Health Assessment
- Construction Management
- Project Management
- Reporting & Program Analytics

OUR TRANSPORTATION ELECTRIFICATION JOURNEY

When we launched our TE division in 2017, we knew the road ahead would give us a unique opportunity to help our client partners navigate electrification initiatives in an unparalleled capacity by rethinking large-scale program implementation with customer-centric workflows, deliverables, and program health visualization.

While our TE team has grown over the years, 90% of our original TE team members remain, bringing with them multi-program key learnings and best practices that support efficiencies and cost-effective solutions. Our timeline provides a high-level glimpse into our own electrification journey and the depth of experience our high-energy team brings into our partnerships.



ELECTRIFICATION EXPERIENCE AT-A-GLANCE



2017

PG&E Electric Vehicle Charge Network

EV Charge Network Program- Level 2
Fleet Ready Program - Level 2/DCFC

Scope of Work Highlights:

Program Eligibility Process Re-Alignment

- Direct to Customer Deliverable Development
- Field Investigations & Survey Data Collection
- Preliminary Design Development & Site Eligibility
- Construction Cost Estimating
- Utility Interconnection, Load Studies & Plan Development
- Final Engineering (Civil & Electrical)
- Permitting (Building Permits)
- Project Pre-Requisite Management

PG&E EV Fleet

- Customer Advising of Charger Type Selection
- Field Investigations & Survey Data Collection
- Preliminary Design Development & Site Eligibility
- Construction Cost Estimating
- Utility Interconnection and Load Studies

SDG&E Power Your Drive

Level 2 - Multi-Family & Workplace

Scope of Work Highlights:

- Program Phasing & Process Development
- Design Standards & Construction Specifications
- Customer Engagement & Program Education
- Database Development & Program Reporting
- Field Investigations & Survey Data Collection
- Preliminary Designs & Site Eligibility
- Construction Cost Estimating
- Utility Interconnection, Load Studies & Plan Development
- Final Engineering (Civil & Electrical)
- Permitting (Building Permits)
- Construction Contracting Bidding Strategy, Support & Evaluation
- Construction Management & Project Closeout

2018



Level 2, DCFC & Fleet Technical Assistance (2018-Present)

Scope of Work Highlights:

- Customer Online Application Development
- Customer Engagement & Management
- Database Creation & Program Reporting
- Field Investigations & Survey Data Collection
- Custom EV Infrastructure Site Assessments & Preliminary Designs
- Utility Interconnection & Load Studies
- Construction Cost Estimating
- Electric Bill Assessments with New EV loads



PG&E EV Fast Charge

Scope of Work Highlights:

- Program Eligibility Scoring Development
- Charger Company Participation Outreach & Education
- Project Application Scoring and Advising
- Field Investigations & Survey Data Collection
- Preliminary Design Development & Site Eligibility
- Construction Cost Estimating
- Utility Interconnection, Load Studies & Plan Development
- Final Engineering (Civil & Electrical)
- Permitting (Building Permits)
- Project Pre-Requisite Management

PG&E EVIP (Employee Charging)

Scope of Work Highlights:

- Field Investigations & Survey Data Collection
- Preliminary Design Development & Site Eligibility
- Construction Cost Estimating
- Utility Interconnection, Load Studies & Plan Development
- Final Engineering (Civil & Electrical)
- Permitting (Building Permits)
- Project Pre-Requisite Management

2019



Program Implementation Design Support

Scope of Work Highlights:

- Facilitation of TE Workshops
- Training of TE Industry Best Practices, Key Learnings, & Organizational Challenges
- Identification of Potential Internal Barriers, Key Stakeholders, & Resolution Support
- Development of Process Flows
- Strategy Support for Internal Organizational Structure, Roles & Responsibilities
- Quantification of Existing or Ongoing EV Programs
- Standardization of Workflow Products Supporting Efficiency in Design & Project Management
- C2-Developed CRM & Costing Tools

ELECTRIFICATION EXPERIENCE AT-A-GLANCE (continued)



2019



Level 2, DCFC & Fleet Technical Assistance (2019-Present)

Scope of Work Highlights:

- Customer Engagement & Onboarding
- Program Reporting
- Field Investigations & Survey Data Collection
- Custom EV Infrastructure Site Assessments
- Preliminary Designs
- Utility Interconnection & Load Studies
- Construction Cost Estimating
- Electric Bill Assessments with New EV Loads
- Customer & Market Readiness Surveys

APS Take Charge Level 2 (2019-Present)

Scope of Work Highlights:

- Health Assessment of Existing Program Implementation & Recommendations
- Program Phasing Defining & Process Realignment
- Design Standard & Construction Specification Development
- Customer Engagement & Program Onboarding
- Outreach & Program Awareness Support
- Database Creation & Program Wide Reporting
- Field Investigations & Survey Data Collection
- Preliminary Design Development & Site Eligibility
- Construction Cost Estimating
- Utility Interconnection, Load Studies & Plan Development
- Final Engineering (Civil & Electrical)
- Permitting (Building Permits)
- Boundary Surveys & Easement Exhibits
- Project Pre-Requisite Management
- Construction Contracting Bidding Strategy, Support & Evaluation
- Construction Management & Project Closeout
- Program Survey Strategy & Development
- Program Vendor Process Alignment



Standards & Workflow Development

Scope of Work Highlights:

- Standards Development
- Development of Process Flows
- Standardization of Workflow Products Supporting Efficiency in Design & Project Management
- On-Call Consultant & Technical Advisor

2020



SCE Charge Ready Transport (Fleet)

Level 2 & DCFC
(Subcontractor 2020-Present)

Scope of Work Highlights:

- Field Investigations & Survey Data Collection
- Underground Utility Detection & Mapping
- Base Mapping for Final Engineering
- Engineering



Fleet Electrification Implementation Development Level 2 & DCFC (2020 - Present)

Scope of Work Highlights:

- Facilitation of Cross-Functional Transportation Electrification Working Sessions
- Summarization & Overview of Transportation Electrification Industry Best Practices & Key Learnings
- Mapping of Existing Workflows
- Deep Dive Sessions with Primary Influencers within Project Critical Workgroups
- Development of Ideal Fleet TE Workflow Customized to Organizational Structure



Level 2, DCFC & Fleet (2020-Present)

Scope of Work Highlights:

- Preliminary Site Development and Site Eligibility
- Construction Cost Estimating
- Final Engineering (Civil & Electrical)
- Utility Interconnection, Load Studies, & Plan Development
- Permitting (Building Permit)
- Construction Support



ELECTRIFICATION EXPERIENCE AT-A-GLANCE (continued)



APS Take Charge - DCFC (2021-Present)

Scope of Work Highlights:

- Owner's Engineer
- Site Assessment & Design
- Program Wide Reporting
- Permitting

APS Take Charge - Ongoing Support (2019 - Present)

Scope of Work Highlights:

- Customer Engagement
- Program Wide Reporting
- Field Investigations & Survey Data Collection
- Construction Cost Estimating
- Final Engineering (Civil and Electrical)
- Permitting (Building Permits)
- Boundary Surveys & Easement Exhibits
- Project Pre-Requisite Management
- Construction Management & Project Closeout

2021



Fleet Electrification Assessment & Roadmap Level 2 & DCFC

Scope of Work Highlights:

- Electrification Assessment for Evergy Fleet
- Total Cost of Ownership
- Electric Vehicle Market Assessment
- Analysis of Existing Fleet & Telematics
- Operational Cost Savings
- Infrastructure Build-Out Key Considerations
- Site Assessment Sampling, Including Design & Costing
- Greenhouse Gas Reduction Impacts
- Budget Forecasting for Vehicle Replacement
- Maintenance Evaluation & Comparisons
- Pilot Program Recommendations



Fleet Electrification Technical Advisor Fleet, Level 2, & DCFC

Scope Of Work Highlights:

- Technical Assistance
- Site Assessment & Preliminary Design Support
- Training Development & Facilitation
- Cross-Functional TE Advisory Support
- Customer Engagement Support
- Collateral & Marketing Development
- Onboarding & Process Alignment

2022



Fleet Electrification Make Ready Market Assessment & Pilot Design Support

Scope of Work Highlights:

- Public & Commercial Fleet Customer Surveys
- Service Territory EV Fleet Market Assessment
- Develop Multi-Sector Fleet Customer EVSE Incentive Cost Estimates
- Fleet Make-Ready Program Design Recommendations
- Fleet Make-Ready Pilot Cost Estimates
- Fleet Electrification Workshop Development & Facilitation with Key Stakeholders



Fleet Electrification Technical Advisor (2021 - Present)

Scope Of Work Highlights:

- Electrification Funding Evaluation
- Risk Mitigation & Process Realignment
- Industry Research & Strategic Alignment
- Tiered Customer Fleet Advisory Solutions
- Site Assessment & Preliminary Design Support
- Cross-Functional TE Advisory Support
- Customer Engagement Support



EV Guidelines Development For EVSE

Scope of Work Highlights:

- Guidelines Development Support Including:
- System Planning & Load Diversification
- Load Forecasting & Demand Management
- Equipment Sizing Methodology & Creation of Calculation Tools & Reference Tables
- Review & Advising on the Current Electric Service Request Manual

ELECTRIFICATION EXPERIENCE AT-A-GLANCE (continued)



APS Solar Communities

(2022 – Present)

Scope of Work Highlights:

- Distribution Design & Engineering
- Site Assessment & Feasibility Studies
- Project Management & Easement Support

APS Take Charge - DCFC

(2021 - Present)

Scope of Work Highlights:

- Owner's Engineer
- Site Assessment & Design
- Program Wide Reporting
- Permitting

APS Take Charge

(2019 - Present)

Scope of Work Highlights:

- Customer Engagement
- Program Wide Reporting
- Field Investigations & Survey Data Collection
- Construction Cost Estimating
- Final Engineering (Civil and Electrical)
- Permitting (Building Permits)
- Boundary Surveys & Easement Exhibits
- Project Pre-Requisite Management
- Construction Management & Project Closeout



PG&E Facility Fleet Charging

(Subcontractor 2022-Present)

Scope of Work Highlights:

- Field Investigations & Survey Data Collection
- Underground Utility Detection & Mapping
- Base Mapping for Final Engineering
- Engineering

2022



Fleet Electrification

(2022 – Present)

Scope of Work Highlights:

- Field Investigations & Survey Data Collection
- Construction Cost Estimating
- Final Engineering (Civil and Electrical)
- Permitting (Building Permits)
- Boundary Surveys & Easement Exhibits
- Project Pre-Requisite Management



Fleet Electrification Assessment & Technical Advisory Support

(2022 - Present)

- Fleet Electrification Assessments
- Technical Advisory Support
- Electric Vehicle Market Assessment
- Operational Cost Savings
- Infrastructure Build-Out Key Considerations
- Preliminary Site Assessments
- Customer Onboarding Process Development



SCE Charge Ready Transport (Fleet)

Level 2 & DCFC

(Subcontractor 2022-Present)

Scope of Work Highlights:

- Field Investigations & Survey Data Collection
- Underground Utility Detection & Mapping
- Base Mapping for Final Engineering
- Engineering



EV Charging Strategy & Implementation Support

Scope of Work Highlights:

- Competitive Landscape Analysis
- Pilot Program Assessment
- Design & Implementation Considerations
- Utility Advisor & Program Support
- Strategic Partner & Funding Assessment

SUCCESS ISN'T ACCIDENTAL; IT'S WORKSHOPPED

Specialized experience matters, but the foundation of our successful partnerships is true collaboration and commitment to the program's overall success, regardless of the level of support we provide or what phase of implementation we kick off our partnership. Leverage our expertise as a sounding board with custom cross-functional workshops to help ensure a successful hand-off from strategy to implementation.

Whether it's workflow alignment, standards development, program health visibility, or ensuring a positive customer journey - we'll bring our program-wide experience from utility programs of all sizes. Workshopping with us through a programmatic lens helps break the siloed environment, avoid common industry missteps with TE initiatives, incorporate best practices, and leverage examples from our TE toolkit to accelerate your program's success.

WORKSHOPS CURATED TO YOUR ORGANIZATIONAL NEEDS

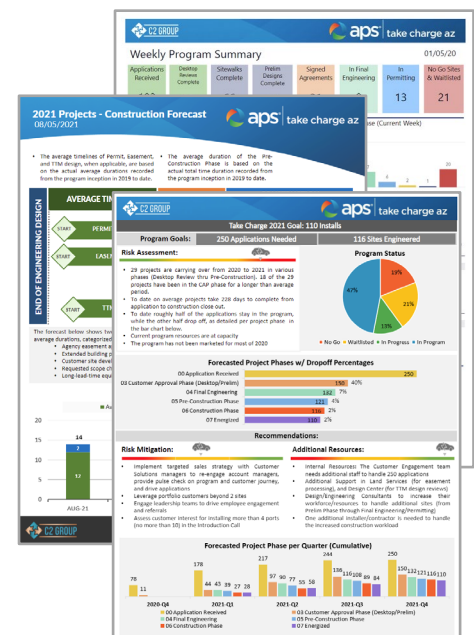
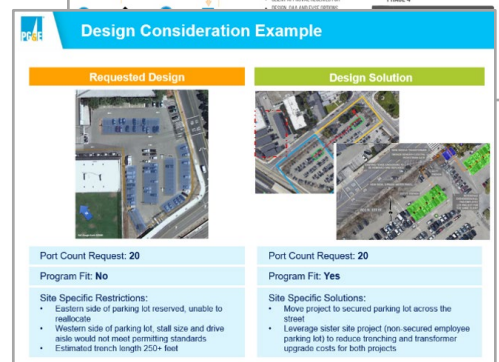
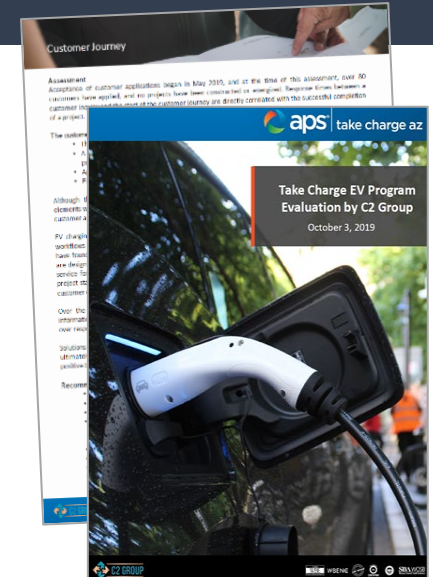
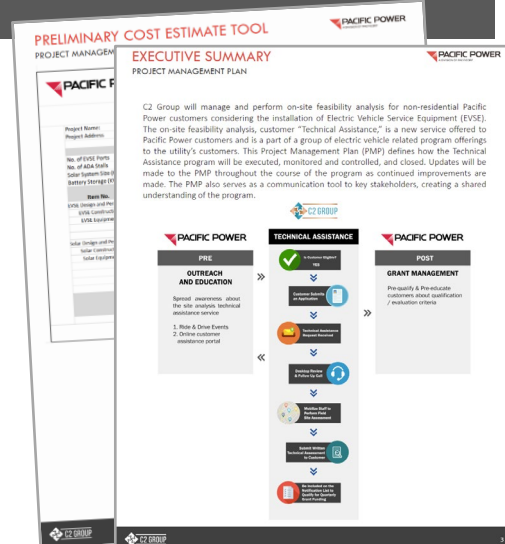
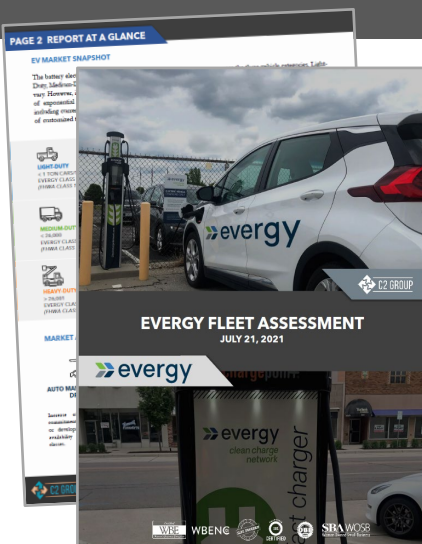
Single and multi-session workshops available with customized final deliverables. Have a different need than the sampling below? No problem, we're here to help!



- Program Design & Implementation Support
- Workflow & Process Support
- Stop Gap Analysis
- Standards & Costing Tool Development
- Regulatory Compliance Support
- Data Management for Program Health Transparency



- Internal & External Alignment Support
- Customizable TE Toolkit Development
- Customer Outreach & Customer Journey Mapping
- Building Program Advocacy with Internal Teams
- Fleet Electrification & The Customer Experience



NAICS CODES

- 541360 Aerial surveying Services
- 541618 Other management consulting services
- 541330 Engineering Services
- 561990 Locating Underground Utility Lines Prior to Digging
- 541360 Geophysical Surveying & Mapping Services
- 541370 Surveying & Mapping (except Geophysical) Services
- 541990 All other professional, scientific, & technical services
- 237130 Construction Management, Power & Communication Transmission Line

DIVERSE BUSINESS CERTIFICATIONS



DBE (CalTrans Firm ID 45762)
 SBA WOSB (Federal)
 WBENC (WBE1900834)
 SBE (CA-DGS #2010788)
 WBE (CPUC VON: 17000819)

DUNS: 03-549-1367
CA SUPPLIER ID: 0058809



PARTIAL CLIENT PARTNER LIST



NEED INFRASTRUCTURE INSPECTION SOLUTIONS? WE'VE GOT THEM!

Not all inspection support is created equal. Our program-wide experience across multiple large-scale utility inspection initiatives provides unparalleled expertise that supports streamlined onboarding. Leverage our technical and programmatic expertise for accelerated acclimation to your unique program-specific standards, implementation, and data management workflows.



DIFFERENTIATORS



- Leading Scope Diverse Large-scale Utility Inspection Programs Since 2018
- **Over 130,000 T&D structures inspected since 2018**
- Program-wide Utility Inspection Expertise & Implementation Support
- **Over 10,000 Line-miles of Inspections Completed in High-Fire Risk Areas.**



- **In-house training Led by IBEW Journeymen Linemen, Utility Engineers & Construction Managers**
- GIS Project Planning Support
- Inspection Visualization & Reporting Support
- **High-Risk Assessment Expertise with Field & Remote Inspection Solutions**



- **2-person teams capturing up to 150 structures per day per team**
- 360 Degree Inspection with UAS Data Capture & Field Inspection
- **Over 240,000 field hours**
- Specializing in Remote Access & Diverse Terrain Data Capture



- **Established Field-Tested UAS & Inspection Workflows & Toolkits**
- Cross-functional Expertise & Support for Efficiency & Quality Control
- Program Design & Standards Development
- **Emergency Response Solutions**

Program Development & Implementation

- UAS Inspection Program Strategy Support
- Implementation Process Development
- Customized Shot Sheet & Standards Development
- Onboarding and Contractor Training Support
- Equipment, Payload, & RFP Support
- Program Health Assessments
- Process Flow Analysis & Gap Assessment
- Regulatory and Compliance Support
- In-House Inspectors & QA
- In-House Data Architects and Data Management
- Program Reporting & Contractor Scorecard Development
- Program Management Support
- Project Management

Field Execution

- UAS/Drone Field Operations
- Infrastructure Inspection
- 360 Degree Inspection- Ground & Aerial
- Aerial Photogrammetry
- Aerial (Drone) LiDAR Scanning
- Vegetation Assessment
- Geographic Information Services (GIS)
- Aerial Topography Mapping
- 3D Modeling
- Engineering
- Survey Control Points
- Emergency Response Mobilization
- Pilot Program Implementation Specialists

TURN-KEY SOLUTIONS MADE SIMPLE FOR YOUR COMPLEX PROGRAMS



Turn-key inspection solutions made simple for our client partners that are designed with efficiency, powered by in-house support, and ensure alignment with your unique program goals, methodologies, and organizational culture.

INITIAL PROGRAM ALIGNMENT

- Program design solutions
- Workflows & standards
- Communication preferences
- Key performance metrics
- Program health assessment

DATA SUPPORT

- GIS project planning
- Data reconciliation
- Imagery QA
- Data quality control
- Program reporting & dashboards

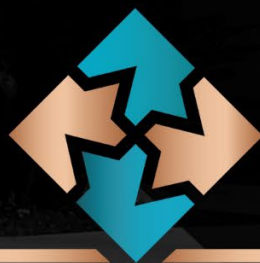
INSPECTION OPERATIONS

- UAS data capture
- 360-degree field inspections
- Field quality control
- Remote inspections solutions
- Emergency response solutions

FEEDBACK LOOP

- Solution based implementation feedback
- Reporting dashboards
- Communication transparency
- Gap analysis
- Progress and accountability reporting





C2 GROUP

8310 Miramar Mall, Suite A
San Diego, CA 92121
PH: 619.880.9797
info@c2group.us

