



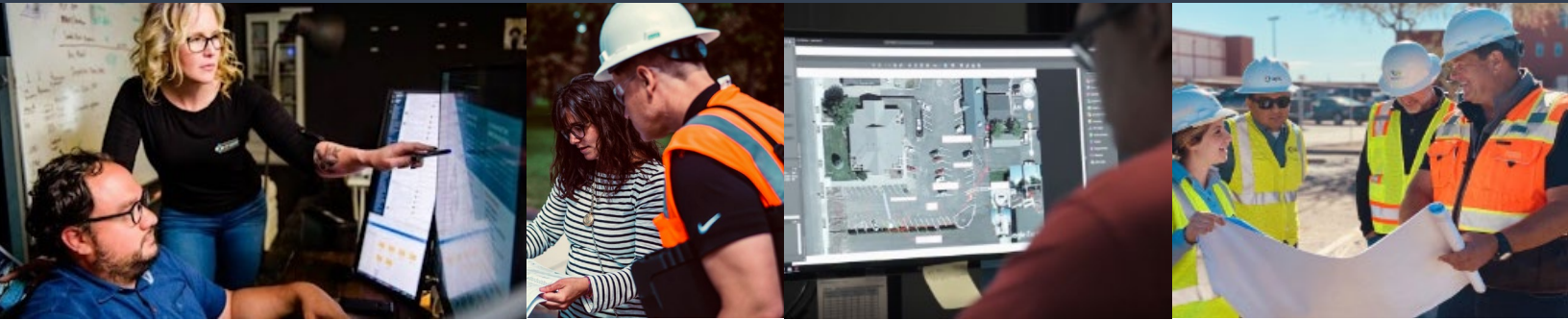
C2 GROUP[®]

2024 OVERVIEW

TRANSPORTATION
ELECTRIFICATION
SOLUTIONS POWERED BY
A PROGRAMMATIC LENS



Company Overview



C2 Group is a certified woman-owned small business that established our engineering and program management team in 2016. Our company culture is centered around developing innovative solutions that offer comprehensive and cost-effective results to our valued clients. Headquartered in San Diego, our team comprises 118 dedicated employees with the capacity and expertise to support large-scale program design and implementation requirements.

With extensive experience in program management and cutting-edge implementation solutions, our diverse team adds significant value to our client partnerships. We take a hands-on approach from leadership down to streamline project deliveries, provide inclusive solution-oriented feedback, and nurture long-term trust with our clients.

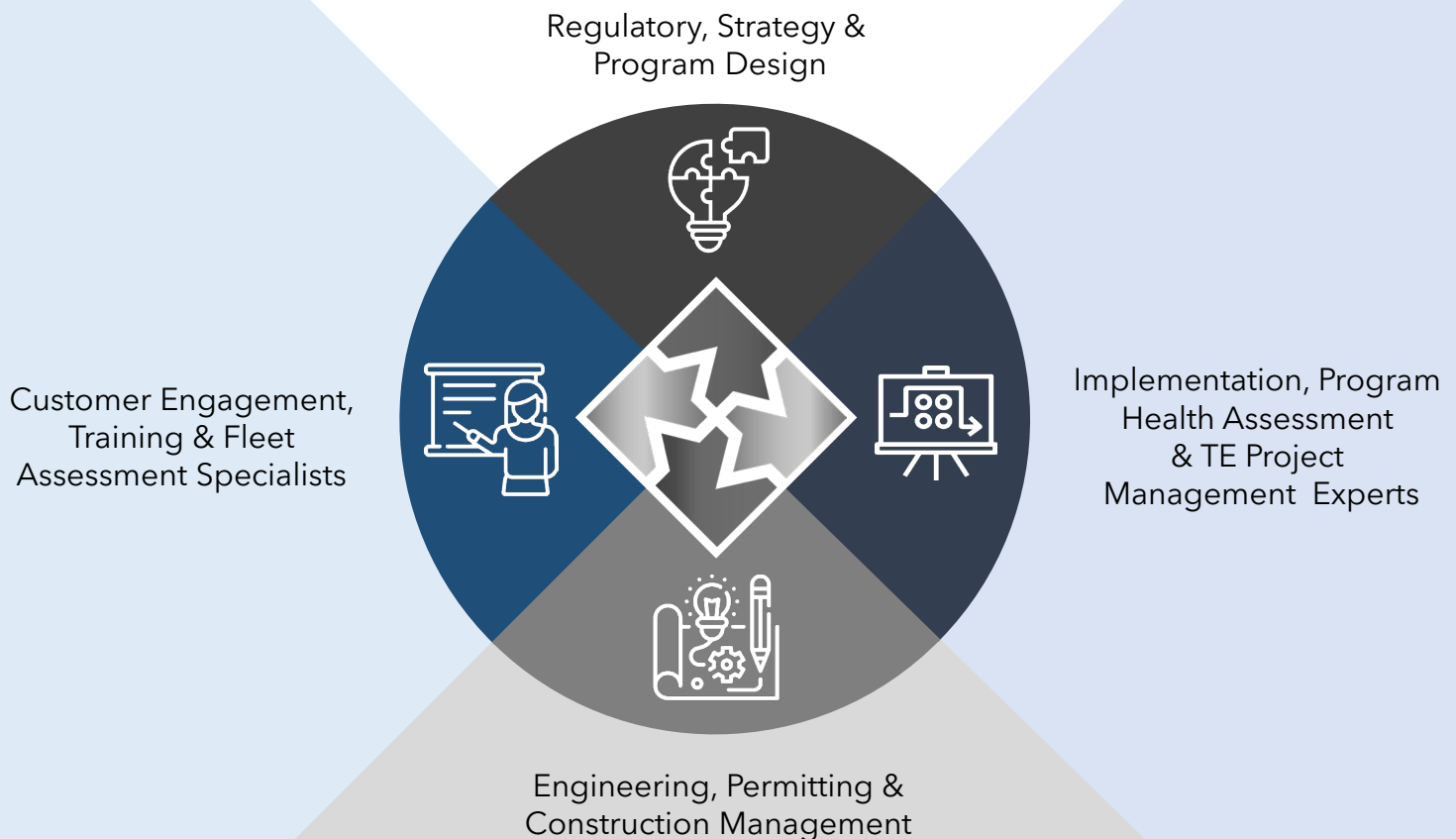
In 2017, we launched our Transportation Electrification (TE) division, focusing on delivering comprehensive turnkey solutions for electrification programs. Within our TE team, we have a dedicated group of planners, engineers, construction managers, project managers, GIS professionals, data specialists, policy experts, and customer engagement experts who collaborate seamlessly to ensure smooth project execution. Our emphasis is on cross-functional teamwork, transparent communication, and the identification of effective solutions to enhance program design and implementation, catering to the dynamic nature of TE programs in response to market shifts and the high level of customer interaction required for these unique projects.

Our team of transportation electrification experts has successfully led large-scale utility electrification initiatives, providing solutions across every critical phase of these distinctive programs. Throughout this journey, our primary focus remains on delivering a customer-centric program design and implementation that aligns with the evolving needs of the market.

OUR VALUES IMMERSIVE INNOVATION • CREATIVE COLLABORATION • DIVERSITY & INCLUSION
LEAD WITH INTEGRITY • TRANSPARENT COMMUNICATION • COMMITMENT TO CLIENT PARTNERSHIP



ELECTRIFICATION CORE COMPETENCIES



ELECTRIFICATION SOLUTIONS POWERED BY A PROGRAMMATIC LENS

Since 2017, our team of TE experts has led large-scale electrification initiatives providing scalable solutions throughout each critical phase of electrification programs. Whether you need single or multi-phase support, we bring the expertise to provide curated solutions to help you reach your TE goals. Tap into our TE toolkits and best practices to accelerate your program's success.

PROGRAM & IMPLEMENTATION DESIGN

- Program Strategy & Design Support
- Implementation Process Development
- Standards Development
- Onboarding & Training Support
- Process Flow Analysis & Gap Assessment
- Electrification Analysis & Planning
- Cross-Functional Workshop Facilitation
- Vendor Management & RFP Development
- In-House Data Architects & Data Management
- Program Reporting & Scorecard Development
- Collateral & Marketing Development

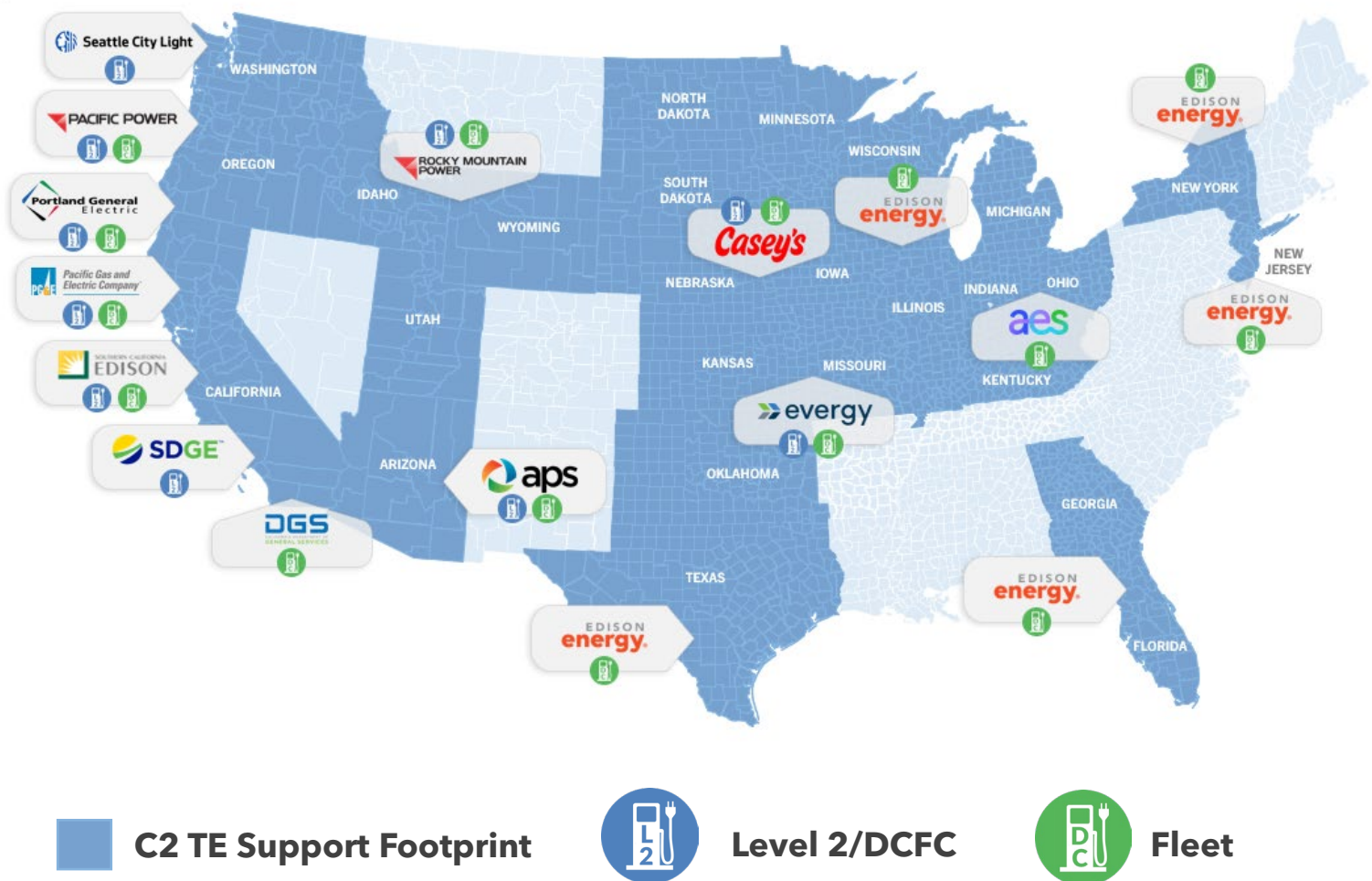
IMPLEMENTATION SUPPORT

- Fleet Assessment Solutions
- Pilot Program Implementation Specialists
- Site Assessment & Field Validation
- Engineering & Permitting
- Program Management Support
- Customer Engagement & Onboarding
- Video Production
- Program Health Assessment
- Construction Management
- Project Management
- Reporting & Program Analytics

OUR TRANSPORTATION ELECTRIFICATION JOURNEY

When we launched our TE division in 2017, we knew the road ahead would give us a unique opportunity to help our client partners navigate electrification initiatives in an unparalleled capacity by rethinking large-scale program implementation with customer-centric workflows, deliverables, and program health visualization.

While our TE team has grown over the years, 90% of our original TE team members remain, bringing with them multi-program key learnings and best practices that support efficiencies and cost-effective solutions. Our timeline provides a high-level glimpse into our own electrification journey and the depth of experience our high-energy team brings into our partnerships.



ELECTRIFICATION EXPERIENCE AT-A-GLANCE



Fleet Make-Ready Market Program Management & Implementation Design

(2023- Present)

Scope of Work Highlights:

- Development of Program Implementation Plan
 - Implementation Manual
 - Customer/Project Selection Criteria, Application & Process Flow
 - Customer Portal Collaboration & Development with Program Partner
 - Customer Agreement Package & Language Development
 - Marketing Plan & Content Development
 - Program Tracking & Reporting Metrics
 - Facilitate Internal Stakeholder Meetings
- Program Implementation Administration
 - Receive Customer Applications Determine Eligibility
 - Identify Customer Project Timelines
 - Request & Obtain BTM Plans for Incentive Review
 - Determining Customer Incentive Amount & Releases
 - Pre-Permitted BTM Plans
 - Onsite QA/QC Assessment
 - Program Reporting
 - Customer Account Management
- Program Technical Support
 - Customer Engagement for Fleet Planning & Operational Questions
 - Electric Distribution Infrastructure Planning, Design, & Construction Process
 - Technical Services & Support
- Customer Experience Management
 - Development of Customer-Centric Messaging & Program Documentation
 - Led by TE Customer Engagement Experts
 - Development of Resource Library to Support All Levels of Customer TE Fleet Knowledge



Level 2, DCFC & Fleet Technical Assistance

(2019-Present)

Scope of Work Highlights:

- Customer Engagement & Onboarding
- Program Reporting
- Field Investigations & Survey Data Collection
- Custom EV Infrastructure Site Assessments
- Preliminary Designs
- Utility Interconnection & Load Studies
- Construction Cost Estimating
- Electric Bill Assessments with New EV Loads
- Customer & Market Readiness Surveys

2023



Fleet Electrification Make-Ready Market Assessment & Pilot Design Support

Scope of Work Highlights:

- Service Territory EV Fleet Market Assessment
- Develop Multi-Sector Fleet Customer EVSE Incentive Cost Estimates
- Fleet Make-Ready Program Design Recommendations
- Fleet Make-Ready Pilot Cost Estimates
- Fleet Electrification Workshop Development & Facilitation with Key Stakeholders
- Public & Commercial Fleet Customer Surveys
- Incorporation of First-Hand Fleet Assessment Experience with Key Learnings & Best Practices



Fleet Advisory Services Program Development & Filing Support

(2022 - Present)

Scope Of Work Highlights:

- Fleet Advisory Services Program Design
 - Development of Tiered Fleet Advisory Solution Options
 - Fleet Electrification Assessment Structure Including TOC, Operational Assessment, Preliminary Design, Supplemental Technical Support
 - Program Budget, Allocation & Forecasting
 - Customer Readiness Strategic Planning & Implementation
 - Marketing & Outreach Strategy
 - Recommended Self-Service Resource Structure & Inclusions
- Ongoing Fleet Advisory Workshop Development & Facilitation with Key Stakeholders
- Fleet Market Assessment Support & Strategic Development
- Assessment of Existing Utility Fleet Advisory Programs, Best Practices, Regulatory Considerations, Implementation Strategy & Lessons Learned
- Collaboration with Industry Partners for Development of Benefits Estimate
- Evaluation of Industry & Market Trends for Fleet Electrification and Gap Assessments in Current Fleet Advisory Offerings
- As-Needed Ongoing Filing Support
- Incorporation of First-Hand Fleet Assessment Experience with Key Learnings & Best Practices

ELECTRIFICATION EXPERIENCE AT-A-GLANCE (continued)



Electrification Technical Advisor

(2021 – Present)

Scope Of Work Highlights:

- TCO & Operational Consideration Advisor
- Site Assessment & Preliminary Design Support
- Cross-Functional TE Advisory Support
- Customer Engagement Support
- Electrification Funding Evaluation & Support
- Risk Mitigation & Process Realignment
- Industry Research & Strategic Alignment
- On-Call Tiered Customer Fleet Advisory Solutions



V2G Roadmap Development

(2022 – 2023)

Scope Of Work Highlights:

- V2G Industry Snapshot Report
 - Industry Trends, Barriers, Impacts
 - Evergy Current State Assessment
 - Technology Capabilities & Large-Scale Implementation Gaps
- Utility V2G Pilot Program Assessment
 - Observations & Trends
 - Regulatory Landscape
 - Cost Considerations
 - Lessons Learned
- V2G Workshop Development & Facilitation with Evergy Key Stakeholders Supporting:
 - Next Steps
 - Regulatory & Policy Considerations
 - Cost Mechanisms
 - Potential Framework
 - Implementation Timeline Forecasting



Level 2, DCFC & Fleet

(2020-Present)

Scope of Work Highlights:

- Preliminary Site Development & Site Eligibility
- Construction Cost Estimating
- Final Engineering (Civil & Electrical)
- Utility Interconnection, Load Studies, & Plan Development
- Permitting (Building Permit)
- Construction Support

2023



Fleet Electrification Assessment & Technical Advisory Support

(2022 – Present)

- Comprehensive Fleet Electrification Assessments
- Technical Advisory Support
- Electric Vehicle Market Assessment
- Operational Cost Savings
- Infrastructure Build-Out Key Considerations
- Preliminary Site Assessments
- Customer Onboarding Process Development



Fleet Electrification

(2022 – Present)

Scope of Work Highlights:

- Multi-State Field & Customer Engagement Support
- Field Investigations & Survey Data Collection
- Construction Cost Estimating
- Final Engineering (Civil and Electrical)
- Permitting (Building Permits)
- Boundary Surveys & Easement Exhibits
- Project Pre-Requisite Management
- On-Site Customer Education & Design Consideration Guidance



SCE Charge Ready Transport (Fleet)

Level 2 & DCFC (Subcontractor 2022-Present)

Scope of Work Highlights:

- Field Investigations & Survey Data Collection
- Underground Utility Detection & Mapping
- Base Mapping for Final Engineering
- Engineering



PG&E Facility Fleet Charging

(Subcontractor 2022-Present)

Scope of Work Highlights:

- Field Investigations & Survey Data Collection
- Underground Utility Detection & Mapping
- Base Mapping for Final Engineering
- Engineering

ELECTRIFICATION EXPERIENCE AT-A-GLANCE (continued)



2022



APS Solar Communities

(2022 - 2023)

Scope of Work Highlights:

- Distribution Design & Engineering
- Site Assessment & Feasibility Studies
- Project Management & Easement Support

APS Take Charge - DCFC

(2021 - Present)

Scope of Work Highlights:

- Owner's Engineer
- Site Assessment & Design
- Program Wide Reporting
- Permitting

APS Take Charge

(2019 - Present)

Scope of Work Highlights:

- Customer Engagement
- Program Wide Reporting
- Field Investigations & Survey Data Collection
- Construction Cost Estimating
- Final Engineering (Civil and Electrical)
- Permitting (Building Permits)
- Boundary Surveys & Easement Exhibits
- Project Pre-Requisite Management
- Construction Management & Project Closeout



PG&E Facility Fleet Charging

(Subcontractor 2022-Present)

Scope of Work Highlights:

- Field Investigations & Survey Data Collection
- Underground Utility Detection & Mapping
- Base Mapping for Final Engineering
- Engineering

Fleet Electrification

(2022 - Present)

Scope of Work Highlights:

- Field Investigations & Survey Data Collection
- Construction Cost Estimating
- Final Engineering (Civil and Electrical)
- Permitting (Building Permits)
- Boundary Surveys & Easement Exhibits
- Project Pre-Requisite Management



Fleet Electrification Assessment & Technical Advisory Support

(2022 - Present)

- Fleet Electrification Assessments
- Technical Advisory Support
- Electric Vehicle Market Assessment
- Operational Cost Savings
- Infrastructure Build-Out Key Considerations
- Preliminary Site Assessments
- Customer Onboarding Process Development



SCE Charge Ready Transport (Fleet)

Level 2 & DCFC

(Subcontractor 2022-Present)

Scope of Work Highlights:

- Field Investigations & Survey Data Collection
- Underground Utility Detection & Mapping
- Base Mapping for Final Engineering
- Engineering



EV Charging Strategy & Implementation Support

Scope of Work Highlights:

- Competitive Landscape Analysis
- Pilot Program Assessment
- Design & Implementation Considerations
- Utility Advisor & Program Support
- Strategic Partner & Funding Assessment

ELECTRIFICATION EXPERIENCE AT-A-GLANCE (continued)



2022



Fleet Electrification Make Ready Market Assessment & Pilot Design Support

Scope of Work Highlights:

- Public & Commercial Fleet Customer Surveys
- Service Territory EV Fleet Market Assessment
- Develop Multi-Sector Fleet Customer EVSE Incentive Cost Estimates
- Fleet Make-Ready Program Design Recommendations
- Fleet Make-Ready Pilot Cost Estimates
- Fleet Electrification Workshop Development & Facilitation with Key Stakeholders

Fleet Electrification Technical Advisor (2021 – Present)

Scope Of Work Highlights:

- TCO & Operational Consideration Advisor
- Site Assessment & Preliminary Design Support
- Cross-Functional TE Advisory Support
- Customer Engagement Support
- Electrification Funding Evaluation & Support
- Risk Mitigation & Process Realignment
- Industry Research & Strategic Alignment
- On-Call Tiered Customer Fleet Advisory Solutions



2021



EV Guidelines Development For EVSE

Scope of Work Highlights:

- Guidelines Development Support Including:
- System Planning & Load Diversification
- Load Forecasting & Demand Management
- Equipment Sizing Methodology & Creation of Calculation Tools & Reference Tables
- Review & Advising on the Current Electric Service Request Manual

Evergy Internal Fleet Electrification Assessment & Roadmap

Level 2 & DCFC

Scope of Work Highlights:

- Electrification Assessment for Evergy Fleet
- Total Cost of Ownership
- Electric Vehicle Market Assessment
- Analysis of Existing Fleet & Telematics
- Operational Cost Savings
- Infrastructure Build-Out Key Considerations
- Site Assessment Sampling, Including Design & Costing
- Greenhouse Gas Reduction Impacts
- Budget Forecasting for Vehicle Replacement
- Maintenance Evaluation & Comparisons
- Pilot Program Recommendations



APS Take Charge - DCFC (2021-2023)

Scope of Work Highlights:

- Owner's Engineer
- Site Assessment & Design
- Program Wide Reporting
- Permitting

APS Take Charge - Ongoing Support (2019 – Present)

Scope of Work Highlights:

- Customer Engagement
- Program Wide Reporting
- Field Investigations & Survey Data Collection
- Construction Cost Estimating
- Final Engineering (Civil and Electrical)
- Permitting (Building Permits)
- Boundary Surveys & Easement Exhibits
- Project Pre-Requisite Management
- Construction Management & Project Closeout

Fleet Electrification Technical Advisor Fleet, Level 2, & DCFC

Scope Of Work Highlights:

- TCO & Operational Consideration Advisor
- Site Assessment & Preliminary Design Support
- Cross-Functional TE Advisory Support
- Customer Engagement Support
- Electrification Funding Evaluation & Support
- Risk Mitigation & Process Realignment
- Industry Research & Strategic Alignment
- On-Call Tiered Customer Fleet Advisory Solutions



ELECTRIFICATION EXPERIENCE AT-A-GLANCE (continued)



SCE Charge Ready Transport (Fleet)

Level 2 & DCFC

(Subcontractor 2020-Present)

Scope of Work Highlights:

- Field Investigations & Survey Data Collection
- Underground Utility Detection & Mapping
- Base Mapping for Final Engineering
- Engineering



Level 2, DCFC & Fleet

(2020-Present)

Scope of Work Highlights:

- Preliminary Site Development and Site Eligibility
- Construction Cost Estimating
- Final Engineering (Civil & Electrical)
- Utility Interconnection, Load Studies, & Plan Development
- Permitting (Building Permit)
- Construction Support



Level 2, DCFC & Fleet Technical Assistance

(2019-Present)

Scope of Work Highlights:

- Customer Engagement & Onboarding
- Program Reporting
- Field Investigations & Survey Data Collection
- Custom EV Infrastructure Site Assessments
- Preliminary Designs
- Utility Interconnection & Load Studies
- Construction Cost Estimating
- Electric Bill Assessments with New EV Loads
- Customer & Market Readiness Surveys



Standards & Workflow Development

Scope of Work Highlights:

- Standards Development
- Development of Process Flows
- Standardization of Workflow Products Supporting Efficiency in Design & Project Management
- On-Call Consultant & Technical Advisor

2020



Evergy Fleet Electrification Implementation Development

Level 2 & DCFC

(2020 - 2022)

Scope of Work Highlights:

- Facilitation of Cross-Functional Transportation Electrification Workshop Sessions
- Summarization & Overview of Transportation Electrification Industry Best Practices & Key Learnings
- Mapping of Existing Workflows
- Deep Dive Sessions with Primary Influencers within Project Critical Workgroups
- Development of Ideal Fleet TE Workflow Customized to Organizational Structure

2019



APS Take Charge

Level 2

(2019-2023)

Scope of Work Highlights:

- Health Assessment of Existing Program Implementation & Recommendations
- Program Phasing Defining & Process Realignment
- Design Standard & Construction Specification Development
- Customer Engagement & Program Onboarding
- Outreach & Program Awareness Support
- Database Creation & Program Wide Reporting
- Field Investigations & Survey Data Collection
- Preliminary Design Development & Site Eligibility
- Construction Cost Estimating
- Utility Interconnection, Load Studies & Plan Development
- Final Engineering (Civil & Electrical)
- Permitting (Building Permits)
- Boundary Surveys & Easement Exhibits
- Project Pre-Requisite Management
- Construction Contracting Bidding Strategy, Support & Evaluation
- Construction Management & Project Closeout
- Program Survey Strategy & Development
- Program Vendor Process Alignment

ELECTRIFICATION EXPERIENCE AT-A-GLANCE



PG&E EV Fast Charge

Scope of Work Highlights:

- Program Eligibility Scoring Development
- Charger Company Participation Outreach & Education
- Project Application Scoring and Advising
- Field Investigations & Survey Data Collection
- Preliminary Design Development & Site Eligibility
- Construction Cost Estimating
- Utility Interconnection, Load Studies & Plan Development
- Final Engineering (Civil & Electrical)
- Permitting (Building Permits)
- Project Pre-Requisite Management

PG&E EVIP (Employee Charging)

Scope of Work Highlights:

- Field Investigations & Survey Data Collection
- Preliminary Design Development & Site Eligibility
- Construction Cost Estimating
- Utility Interconnection, Load Studies & Plan Development
- Final Engineering (Civil & Electrical)
- Permitting (Building Permits)
- Project Pre-Requisite Management



PG&E Electric Vehicle Charge Network

EV Charge Network Program- Level 2

Fleet Ready Program - Level 2/DCFC

Scope of Work Highlights:

Program Eligibility Process Re-Alignment

- Direct to Customer Deliverable Development
- Field Investigations & Survey Data Collection
- Preliminary Design Development & Site Eligibility
- Construction Cost Estimating
- Utility Interconnection, Load Studies & Plan Development
- Final Engineering (Civil & Electrical)
- Permitting (Building Permits)
- Project Pre-Requisite Management

PG&E EV Fleet

- Customer Advising of Charger Type Selection
- Field Investigations & Survey Data Collection
- Preliminary Design Development & Site Eligibility
- Construction Cost Estimating
- Utility Interconnection and Load Studies

2019



Program Implementation Design Support

Scope of Work Highlights:

- Facilitation of TE Workshops
- Training of TE Industry Best Practices, Key Learnings, & Organizational Challenges
- Identification of Potential Internal Barriers, Key Stakeholders, & Resolution Support
- Development of Process Flows
- Strategy Support for Internal Organizational Structure, Roles & Responsibilities
- Quantification of Existing or Ongoing EV Programs
- Standardization of Workflow Products Supporting Efficiency in Design & Project Management
- C2-Developed CRM & Costing Tools



Level 2, DCFC & Fleet Technical Assistance

(2018-Present)

Scope of Work Highlights:

- Customer Online Application Development
- Customer Engagement & Management
- Database Creation & Program Reporting
- Field Investigations & Survey Data Collection
- Custom EV Infrastructure Site Assessments & Preliminary Designs
- Utility Interconnection & Load Studies
- Construction Cost Estimating
- Electric Bill Assessments with New EV loads

2018



SDG&E Power Your Drive

Level 2 - Multi-Family & Workplace

Scope of Work Highlights:

- Program Phasing & Process Development
- Design Standards & Construction Specifications
- Customer Engagement & Program Education
- Database Development & Program Reporting
- Field Investigations & Survey Data Collection
- Preliminary Designs & Site Eligibility
- Construction Cost Estimating
- Utility Interconnection, Load Studies & Plan Development
- Final Engineering (Civil & Electrical)
- Permitting (Building Permits)
- Construction Contracting Bidding Strategy, Support & Evaluation
- Construction Management & Project Closeout

2017

SUCCESS ISN'T ACCIDENTAL; IT'S WORKSHOPPED

Specialized experience matters, but the foundation of our successful partnerships is true collaboration and commitment to the program's overall success, regardless of the level of support we provide or what phase of implementation we kick off our partnership. Leverage our expertise as a sounding board with custom cross-functional workshops to help ensure a successful hand-off from strategy to implementation.

Whether it's workflow alignment, standards development, program health visibility, or ensuring a positive customer journey - we'll bring our program-wide experience from utility programs of all sizes. Workshopping with us through a programmatic lens helps break the siloed environment, avoid common industry missteps with TE initiatives, incorporate best practices, and leverage examples from our TE toolkit to accelerate your program's success.

WORKSHOPS CURATED TO YOUR ORGANIZATIONAL NEEDS

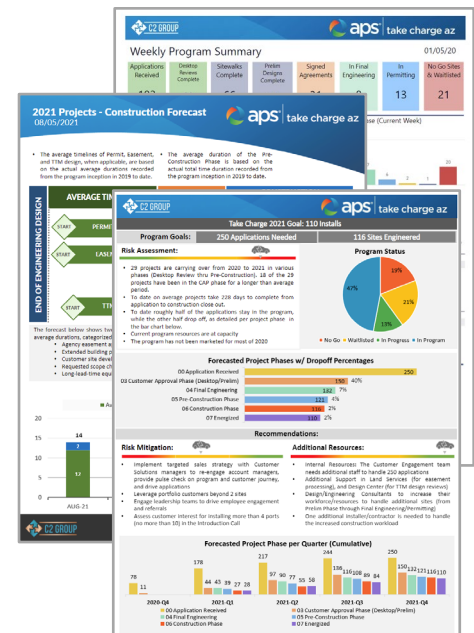
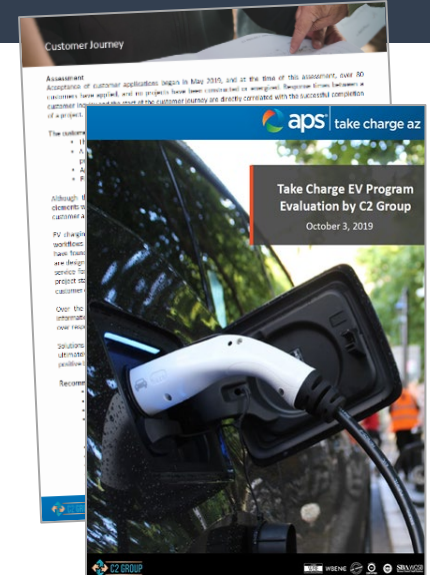
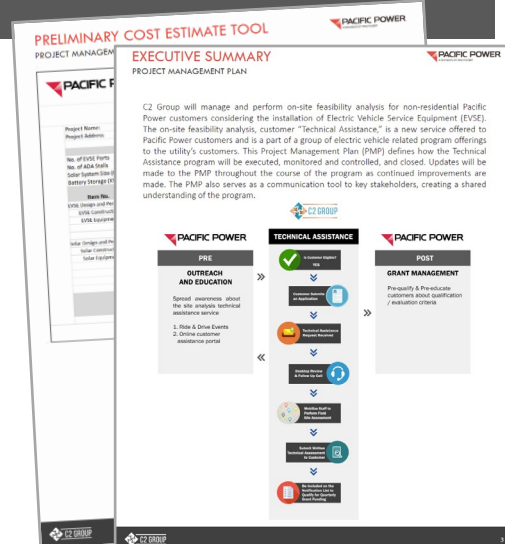
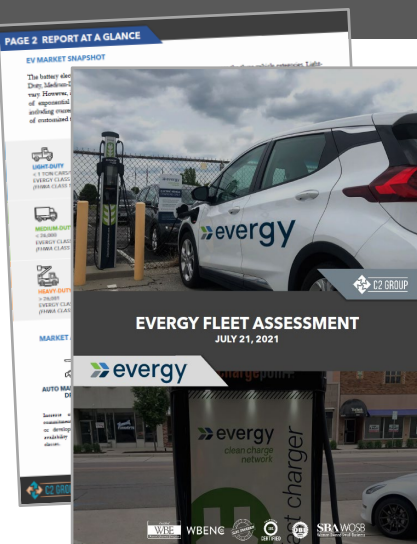
Single and multi-session workshops available with customized final deliverables. Have a different need than the sampling below? No problem, we're here to help!



- Program Design & Implementation Support
- Workflow & Process Support
- Stop Gap Analysis
- Standards & Costing Tool Development
- Regulatory Compliance Support
- Data Management for Program Health Transparency



- Internal & External Alignment Support
- Customizable TE Toolkit Development
- Customer Outreach & Customer Journey Mapping
- Building Program Advocacy with Internal Teams
- Fleet Electrification & The Customer Experience



NAICS CODES

- 541360 Aerial surveying Services
- 541618 Other management consulting services
- 541330 Engineering Services
- 561990 Locating Underground Utility Lines Prior to Digging
- 541360 Geophysical Surveying & Mapping Services
- 541370 Surveying & Mapping (except Geophysical) Services
- 541990 All other professional, scientific, & technical services
- 237130 Construction Management, Power & Communication Transmission Line

DIVERSE BUSINESS CERTIFICATIONS



DBE (CalTrans Firm ID 45762)
 SBA WOSB (Federal)
 WBENC (WBE1900834)
 SBE (CA-DGS #2010788)
 WBE (CPUC VON: 17000819)

DUNS: 03-549-1367
CA SUPPLIER ID: 0058809



PARTIAL CLIENT PARTNER LIST



NEED INFRASTRUCTURE INSPECTION SOLUTIONS? WE'VE GOT THEM!

Not all inspection and wildfire mitigation support is created equal. Our program-wide experience across multiple large-scale utility inspection initiatives provides unparalleled expertise that supports streamlined onboarding. Leverage our technical and programmatic expertise for accelerated acclimation to your unique program-specific standards, implementation, and data management workflows.



DIFFERENTIATORS



- Leading Scope Diverse Large-scale Utility Inspection Programs Since 2018
- **Over 130,000 T&D structures inspected since 2018**
- Program-wide Utility Inspection Expertise & Implementation Support
- **Over 10,000 Line-miles of Inspections Completed in High-Fire Risk Areas.**



- **In-house training Led by IBEW Journeymen Linemen, Utility Engineers & Construction Managers**
- GIS Project Planning Support
- Inspection Visualization & Reporting Support
- **High-Risk Assessment Expertise with Field & Remote Inspection Solutions**



- **2-person teams capturing up to 150 structures per day per team**
- 360 Degree Inspection with UAS Data Capture & Field Inspection
- **Over 240,000 field hours**
- Specializing in Remote Access & Diverse Terrain Data Capture



- **Established Field-Tested UAS & Inspection Workflows & Toolkits**
- Cross-functional Expertise & Support for Efficiency & Quality Control
- Program Design & Standards Development
- **Emergency Response Solutions**

Program Development & Implementation

- UAS Inspection Program Strategy Support
- Implementation Process Development
- Customized Shot Sheet & Standards Development
- Onboarding and Contractor Training Support
- Equipment, Payload, & RFP Support
- Program Health Assessments
- Process Flow Analysis & Gap Assessment
- Regulatory and Compliance Support
- In-House Inspectors & QA
- In-House Data Architects and Data Management
- Program Reporting & Contractor Scorecard Development
- Program Management Support
- Project Management

Field Execution

- UAS/Drone Field Operations
- Infrastructure Inspection
- 360 Degree Inspection- Ground & Aerial
- Aerial Photogrammetry
- Aerial (Drone) LiDAR Scanning
- Vegetation Assessment
- Geographic Information Services (GIS)
- Aerial Topography Mapping
- 3D Modeling
- Engineering
- Survey Control Points
- Emergency Response Mobilization
- Pilot Program Implementation Specialists

TURN-KEY SOLUTIONS MADE SIMPLE FOR YOUR COMPLEX PROGRAMS



Turn-key inspection and wildfire mitigation solutions made simple for our client partners that are designed with efficiency, powered by in-house support, and ensure alignment with your unique program goals, methodologies, and organizational culture.

INITIAL PROGRAM ALIGNMENT

- Program design solutions
- Workflows & standards
- Communication preferences
- Key performance metrics
- Program health assessment

DATA SUPPORT

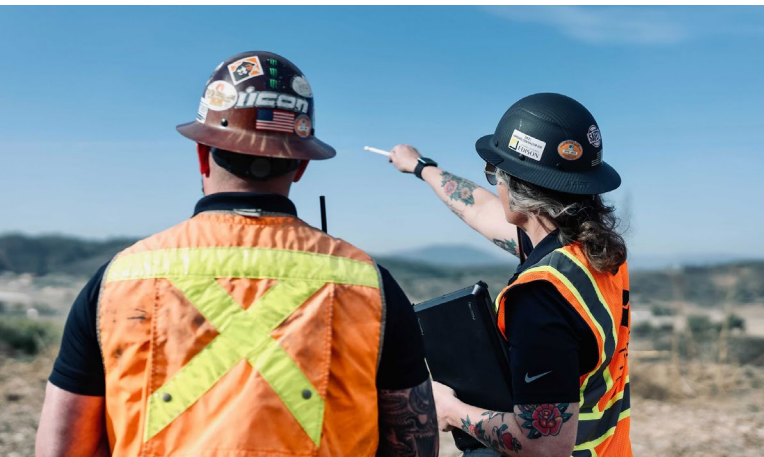
- GIS project planning
- Data reconciliation
- Imagery QA
- Data quality control
- Program reporting & dashboards

INSPECTION OPERATIONS

- UAS data capture
- 360-degree field inspections
- Field quality control
- Remote inspections solutions
- Emergency response solutions

FEEDBACK LOOP

- Solution based implementation feedback
- Reporting dashboards
- Communication transparency
- Gap analysis
- Progress and accountability reporting





C2 GROUP®



Download Digital Brochure

or visit our website
www.c2group.us



C2 GROUP[®]

8340 Juniper Creek Ln.
San Diego, CA 92126

PH: 619.880.9797
info@c2group.us

